



---

**Description:**

Capitol Products Inc. manufactures structural and non-structural Burnished concrete masonry units. The structural units conform to ASTM C90, Specification for Loadbearing Masonry Units, Medium Weight. These units also comply with the latest editions of the International Building Code (IBC). The non-structural units conform to ASTM C129, Specification for Nonloadbearing Concrete Masonry Units. Special order aggregates can be used to achieve different architectural effects, weights, or strengths. All block are run on a per job basis and are available with a four to six week lead time. Minimum quantity production order may be required.

Burnishing is the process of running concrete masonry block through a polishing line and burnishing the face of the unit. Burnishing is when the face of the unit is ground to a smooth “burnished”, flat, consistent surface which exposes the aggregates in the composition of the block. Burnishing can be on as many as three sides of each unit depending on the application.

---

**Color:**

Granular pigments for colored concrete are designed to be used specifically in cementitious materials. Capitol Products utilizes such color pigments that are certified ASTM C979 for integral coloring. These pigments allows for a wide range of colors. The pigments are only a part of the color spectrum we offer as the aggregates used in manufacturing the concrete masonry units will also impact the final color. Custom color matching is also available in certain circumstances. Below is a list of colors available in Burnish.

Austin Limestone, Brownwood, Coal, Coral, Dim Gray, Misty Rosa, Pink Ruby, Rustic Capitol, Saddle Brown, Sandy Brown, Sea Shell, Sienna, Silver, Wester Gold, Wheat, Platinum, Carbon, (Regular Grey – No Color Added)

---

**Safety:**

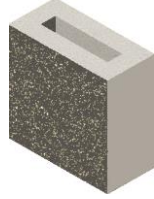
Always wear proper PPE such as hard hats, steel toes boots, safety glasses, gloves and dust masks when working with this product. Please refer to MSDS for all hazards.

Usage:

4" x 8" x 16"



4" x 8" x 8" Halves



4" x 8" x 16" L- Corner



4" x 4" x 16"



4" x 12" x 24" Solid



4" x 8" x 24" Solid



4" x 4" x 24" Solid



4" x 8" x 16"



6" x 8" x 16"



6" x 8" x 8" Halves



8" x 8" x 16"

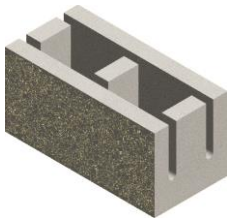


8" x 8" x 16" Corners



8" x 8" x 16"

Knockout Bond Beams



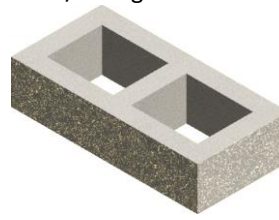
8" x 8" x 16"

Solid Bottom Bond Beams



8" x 4" x 16"

1/2 Height Corner



8" x 4" x 16"

1/2 Height Stretcher



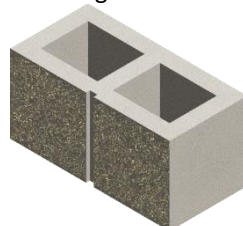
8" x 8" x 16"

Single Score Corner



8" x 8" x 16"

Single Score



8" x 8" x 8" Halves



12" x 8" x 16"

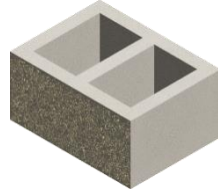
Knock Out Bond Beam



12" x 8" x 16"  
Single Score



12" x 8" x 16"



12" x 8" x 16"  
Solid Bottom Bond Beam



## Technical Data:

	Compressive Strength	Absorption	Density	Equivalent Web Thickness	Min Faceshell	Equivalent Thickness	Fire Rating	Actual Size
4x8x16	2,027 psi	12.92 pcf	116.34 pcf	2.50 in.	1.28 in.	3.04 in.	1 Hour	3 5/8" x 7 5/8" x 15 5/8"
6x8x16	2,770 psi	12.48 pcf	120.05 pcf	2.54 in.	1.04 in.	2.84 in.	1 Hour	5 5/8" x 7 5/8" x 15 5/8"
8x8x16	3,927 psi	10.06 pcf	125.69 pcf	2.75 in.	1.29 in.	3.92 in.	1 ¼ Hour	7 5/8" x 7 5/8" x 15 5/8"
12x8x16	3,493 psi	9.30 pcf	125.67 pcf	2.98 in.	1.30 in.	5.06 in.	3 Hour	11 5/8" x 7 5/8" x 15 5/8"

All color Split-Face Block has Eucon Blocktite integral water repellent except for the Regular Grey. Eucon Blocktite can be added to

## PART 1 – GENERAL

### SUBMITTAL

Submit color samples for selection from manufacturer's group. Submit product literature, third party certified test reports and full size samples of each color specified.

### QUALITY ASSURANCE

Certifications: Capitol Products Burnished shall comply with the recommendations of the National Concrete Masonry Association, and conform to ASTM C90, for hollow and solid load bearing units. A sample panel shall be constructed for approval of color and texture prior to erecting walls. All faces of units shall be ground to a depth sufficient to uniformly expose the aggregates.

### RELATED INFORMATION

Fire Resistance: Hourly fire rating information defined and required by NCMA TEK 7-01C which can be found at: <http://ncma-br.org> (Under the Tek then 7 Fire Resistance)

ASTM C90-16a: Standard Specification for Loadbearing Concrete Masonry Units.

## PART 2 – PRODUCTS

### Capitol Products Burnished Concrete Masonry Unit

Austin Limestone, Brownwood, Coal, Coral, Dim Gray, Misty Rosa, Pink Ruby, Rustic Capitol, Saddle Brown, Sandy Brown, Sea Shell, Sienna, Silver, Wester Gold, Wheat, Platinum, Carbon, (Regular Grey – No Color Added)

### SIZES

4x8x16, 4x8x8, 4x4x16, 4x4x24, 4x8x24, 4x12x24, 4x16x16, 6x8x16, 6x8x8, 8x8x16, 8x4x16, 8x8x8, 12x8x16,

### MANUFACTURER

Capitol Products Inc.: 7531 North IH 35, Jarrell, TX 76537

7531 North IH 35, Jarrell, TX 76537

512-863-9967

## PART 3 – EXECUTION

### LAYING MASONRY WALLS

All capitol Products Burnished Masonry Units shall be drawn from more than one pallet at a time and must be laid using the best concrete masonry practices. Lay block with the faces level, plumb and true to the mason line strung horizontally at the finished side of the block. Both horizontal and vertical joints should be 3/8" on the finished side of the wall. Joints should be neatly and uniformly tooled after they are finger-hard. Cut pieces should be sized and placed properly to maintain bond and consistency.

### INSTALLATION

**Lighting:** Always use adequate lighting for masonry work. For even and consistent illumination, always place lights at a reasonable distance from the wall. For best results, do not use trough lighting.

**Cutting:** Use the correct type of motor driven masonry saws to make all cuts, including those for bonding, holes, boxes etc. Use diamond or abrasive blades and make neat cuts to provide the best appearance.

## MORTAR BED & JOINTING

Units shall be laid with full mortar coverage on head and bed joints without blocking cores. All joints shall be tooled when finger-print hard into a concave shape. Remove mortar from the face of masonry before it sets. Tuck-point all joints of scored units for creating proper appearance. All exterior scored units must be tuck-pointed to prevent water penetration. DO NOT RAKE JOINTS.

## FINAL CLEANING

- A. Cut out defective mortar joints and holes in exposed masonry and re-point with mortar.
- B. Clean a sample wall panel with approved cleaner. Only proceed with cleaning after sample panel has been approved by the Architect.
- C. Clean architectural concrete masonry in accordance with the masonry manufacturer's and the proprietary cleaning product manufacturer's recommendations.
- D. After cleaning, allow units to completely dry for days and when specified, apply a sealer that is recommended by Capitol Products Inc. for the color(s) that has been chosen.

## FIELD COAT APPLICATION

Apply two even coats of sealant, making sure the mortar joints are thoroughly covered. Airless spraying is always the preferred method. It is recommended that an experienced painting contractor apply the field coats of sealant. Manufacturer will provide the name of sealant used on each job upon request and reserves the right to change brands at its sole discretion. It is crucial to note that different sealers are recommended from the manufacturer for different colors due to possible discoloration of lighter pigments. Future maintenance should only require normal cleaning for Interior Burnished Masonry. Exterior Burnished Masonry may require another coat of sealant after 10-15 years of weathering.

**Note: Consult NCMA TEK NOTES regarding proper installation techniques for concrete masonry.**

Revision Date: 07/16/2017

This revision will replace and supersede any previous product data sheets.

Page 4 of 4